

Technical sheet :

# **MLT 625 75 H**

---



Capacities		Metric	Imperial
Max. capacity	Q	2500 kg	5512 lbs
Max. lifting height	h3	5.9 m	19 ft 4 in
Max. outreach	l4	3.3 m	10 ft 10 in
Reach at max. height		0.5 m	1 ft 8 in
Breakout force with bucket		4205 daN	4205 daN
Weight and dimensions			
Unladen weight (with forks)		4922 kg	10851 lbs
Ground clearance	m4	0.38 m	1 ft 3 in
Wheelbase	y	2.3 m	7 ft 7 in
Overall length to carriage (with hitch hook)	l11	3.9 m	12 ft 10 in
Front overhang		0.99 mm	0.039 in
Overall width	b1	1.81 m	5 ft 11 in
Overall cab width	b4	0.8 m	2 ft 7 in
Overall height	h17	2 m	6 ft 7 in
Tilt-down angle	a5	117 °	117 °
Tilt-up angle	a4	12 °	12 °
External turning radius (over tyres)	Wa1	3.31 m	10 ft 10 in
Standard tyres		Alliance - A580 - 300/75 R18	Alliance - A580 - 300/75 R18
Drive wheels (front / rear)		2 / 2	2 / 2
Steering wheels (front / rear)		2 / 2	2 / 2
Performances			
Lifting		7.3 s	7.3 s
Lowering		4.95 s	4.95 s
Extension		5.2 s	5.2 s
Retraction		3.7 s	3.7 s
Crowd		3.2 s	3.2 s
Dump		3.2 s	3.2 s
Engine			
Engine brand		Kubota	Kubota
Engine norm		Stage V	Stage V
Engine model		V3307-CR-T-ESB	V3307-CR-T-ESB
Number of cylinders - Capacity of cylinders		4 - 3331 cm <sup>3</sup>	4 - 203.27 in <sup>3</sup>
I.C. Engine power rating / Power (kW)		75 Hp / 55.4 kW	75 Hp / 55.4 kW
Max. torque / Engine rotation		265 @1400 tr/min	265 @1400 tr/min
Drawbar pull (Laden)		3240 daN	3240 daN
Reversible fan		Standard	Standard
Engine cooling system		2 radiators water hydraulic oil	2 radiators water hydraulic oil
Transmission			
Transmission type		Hydrostatic	Hydrostatic
Number of gears (forward / reverse)		2 / 2	2 / 2
Max. travel speed (may vary according to applicable regulations)		24.9 km/h	15.5 mph
Differential lock		Limited slip differential on front axle	Limited slip differential on front axle
Parking brake		Automatic negative parking brake	Automatic negative parking brake
Service brake		Oil-Immersed multi-discs braking on front axles	Oil-Immersed multi-discs braking on front axles
Hydraulics			
Hydraulic pump type		Gear Pump	Gear Pump
Hydraulic flow - Pressure		86 l/min - 235 Bar	86 l/min - 16 PSI
Tank capacities			
Hydraulic oil		115 l	25.3 gal
Fuel tank		63 l	13.86 gal
Noise and vibration			
Noise at driving position (LpA) tested following NF EN 12053 norm		76 dB(A)	76 dB(A)
Environmental noise (LwA)		104 dB(A)	104 dB(A)
Vibration to whole hand/arm		< 2.50 m/s <sup>2</sup>	< 2.50 m/s <sup>2</sup>
Miscellaneous			
Safety tractor homologation / cabin homologation		Cab ROPS - FOPS Level 1	Cab ROPS - FOPS Level 1
Controls		JSM	JSM

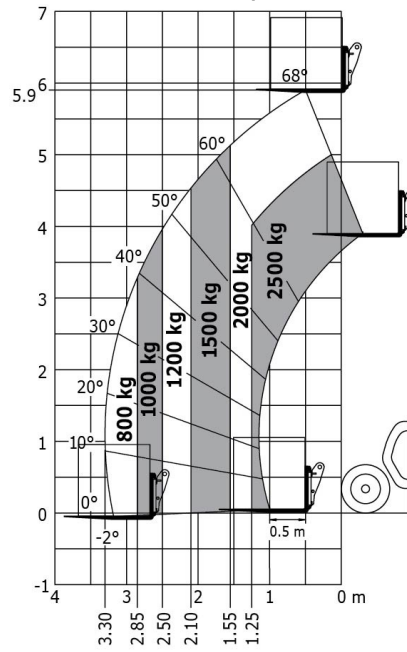
# Options / Finishing

S : Standard / O : Optional / - : Not available

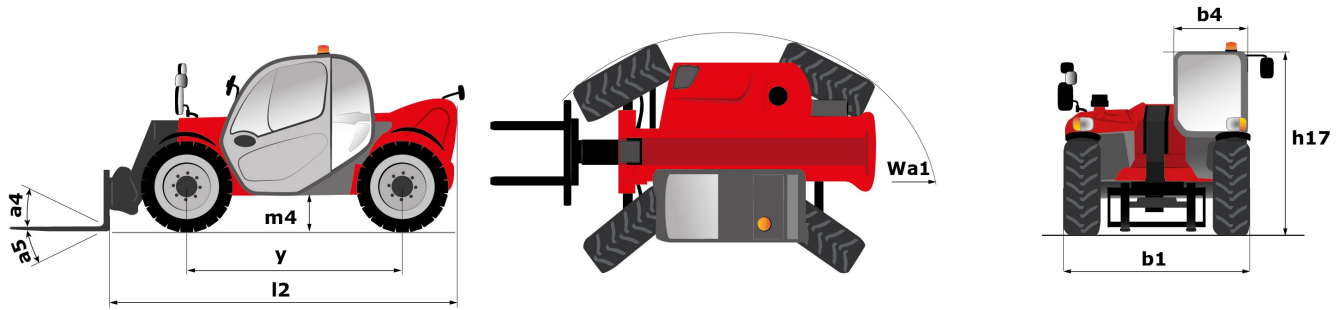
	Classic	Premium	Elite
<b>General</b>			
Manual rotating towing hitch	O	O	O
<b>Comfort</b>			
Mechanical cloth-covered seat (GRAMMER)	S	-	-
Air suspension cloth-covered seat (GRAMMER)	O	S	S
Tuner car radio (50 W)	S	-	-
Bluetooth USB car radio with extra microphone (100 W)	O	O	S
Air conditioning with manual adjustment	O	S	S
Boom suspension	-	O	S
<b>Hydraulics</b>			
Hydraulic attachment locking	O	O	O
<b>Electricity / Safety</b>			
Audio warning on reverse	S	S	S
Front and rear work lights on cab (x4: 2 front + 2 rear)	S	-	-
Front and rear LED work lights on cab (x4 : 2 front + 2 rear)	O	S	S
Poultry farming blue lights	O	O	O
Boom Work Lights (on fixed part) (x2)	O	O	-
Audio warning onreverse movements	S	S	S
<b>Cab options</b>			
Manual air conditioning	O	S	S
<b>Lighting &amp; Protections</b>			
Flat LED rotating beacon (-71 mm)	O	O	O
<b>Boom options</b>			
Easy Connect System (E.C.S.)	S	S	S
Continuous flow hydraulics	O	O	S
Return pipe to hydraulic oil tank	O	O	O
Electrovalve for 2 hydraulic functions (on boom head)	O	O	O
<b>Engine &amp; Filtration</b>			
Auto reversing fan	S	S	S
Quick drain hose	S	S	S

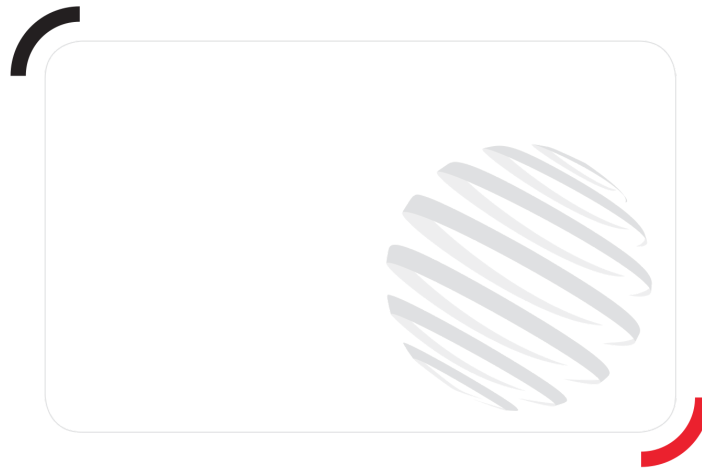
# Load chart

## Rough terrain load chart (EN 1459 B) Metric



# Dimensional drawing





Siège Social  
430 rue de l'Aubinière - 44150 Ancenis Cedex - France  
Tel: +33(0)2 40 09 10 11 - Fax: +33 (0)2 40 09 10 97  
[www.manitou.com](http://www.manitou.com)



This brochure describes versions and configuration options for Manitou products which may be fitted with different equipment. The equipment described in this brochure may be standard, optional or not available depending on version. Manitou reserves the right to change the specifications shown and described at any time and without prior warning. The manufacturer is not liable for the specifications given. For more information, contact your Manitou dealer. Non-contractual document. Product descriptions may differ from actual products. List of specifications is not comprehensive. The logos and visual identity of the company are the property of Manitou and may not be used without authorisation. All rights reserved. The photos and diagrams contained in this brochure are provided for information only.

MANITOU BF SA - Limited company with board of directors - Share capital: 39,547,824 euros - 857 802 508  
RCS Nantes