

Technical sheet :

MLT 840-145 PS+



Capacities		Metric	Imperial
Max. capacity	Q	4000 kg	8818 lbs
Max. lifting height	h3	7.55 m	24 ft 9 in
Max. outreach	l4	4.45 m	14 ft 7 in
Reach at max. height		0.9 m	2 ft 11 in
Breakout force with bucket		5500 daN	5500 daN
Weight and dimensions			
Unladen weight (with forks)		8410 kg	18541 lbs
Ground clearance	m4	0.43 m	1 ft 5 in
Wheelbase	y	2.88 m	9 ft 5 in
Overall length to carriage (with hitch hook)	l11	5.37 m	17 ft 7 in
Front overhang		1.47 m	4 ft 10 in
Overall width	b1	2.39 m	7 ft 10 in
Overall cab width	b4	1 m	3 ft 3 in
Overall height	h17	2.39 m	7 ft 10 in
Tilt-down angle	a5	135 °	135 °
Tilt-up angle	a4	12 °	12 °
External turning radius (over tyres)	Wa1	3.74 m	12 ft 3 in
Standard tyres		Trelleborg - TH400 - 460/70 R24 159A8	Trelleborg - TH400 - 460/70 R24 159A8
Drive wheels (front / rear)		2 / 2	2 / 2
Steering wheels (front / rear)		2 / 2	2 / 2
Performances			
Lifting		6.6 s	6.6 s
Lowering		4.8 s	4.8 s
Extension		6.3 s	6.3 s
Retraction		5.2 s	5.2 s
Crowd		3 s	3 s
Dump		2.4 s	2.4 s
Engine			
Engine brand		John Deere	John Deere
Engine norm		Stage IV	Stage IV
Engine model		PWL4045	PWL4045
Number of cylinders - Capacity of cylinders		4 - 4500 cm ³	4 - 274.61 in ³
I.C. Engine power rating / Power (kW)		141 Hp / 104 kW	141 Hp / 104 kW
Max. torque / Engine rotation		540 @1600 tr/min	540 @1600 tr/min
Drawbar pull (Laden)		9300 daN	9300 daN
Reversible fan		Standard	Standard
Engine cooling system		4 radiators (water + intercooler + hydraulic oil + transmission oil)	4 radiators (water + intercooler + hydraulic oil + transmission oil)
Transmission			
Transmission type		Torque Converter	Torque Converter
Gearbox		Powershift Plus	Powershift Plus
Number of gears (forward / reverse)		5 / 3	5 / 3
Max. travel speed (may vary according to applicable regulations)		40 km/h	24.9 mph
Differential lock		Limited slip differential on front & rear axles	Limited slip differential on front & rear axles
Parking brake		Automatic Negative Hand-brake	Automatic Negative Hand-brake
Service brake		Oil-immersed multi-discs on front & rear axles	Oil-immersed multi-discs on front & rear axles
Hydraulics			
Hydraulic pump type		Load sensing pump	Load sensing pump
Hydraulic flow - Pressure		200 l/min - 270 Bar	200 l/min - 19 PSI
Flow sharing distributor		Standard	Standard
Tank capacities			
Hydraulic oil		156 l	34.32 gal
Fuel tank		126 l	27.72 gal
Diesel Exhaust fluid (AdBlue® type)		12 l	2.64 gal
Noise and vibration			
Noise at driving position (LpA) tested following NF EN 12053 norm		74 dB(A)	74 dB(A)
Environmental noise (LwA)		105 dB(A)	105 dB(A)
Vibration to whole hand/arm		< 2.50 m/s ²	< 2.50 m/s ²
Miscellaneous			

Miscellaneous			
Safety tractor homologation / cabin homologation		Safety tractor homologation - Cab ROPS - FOPS Level 2	Safety tractor homologation - Cab ROPS - FOPS Level 2
Controls		JSM	JSM

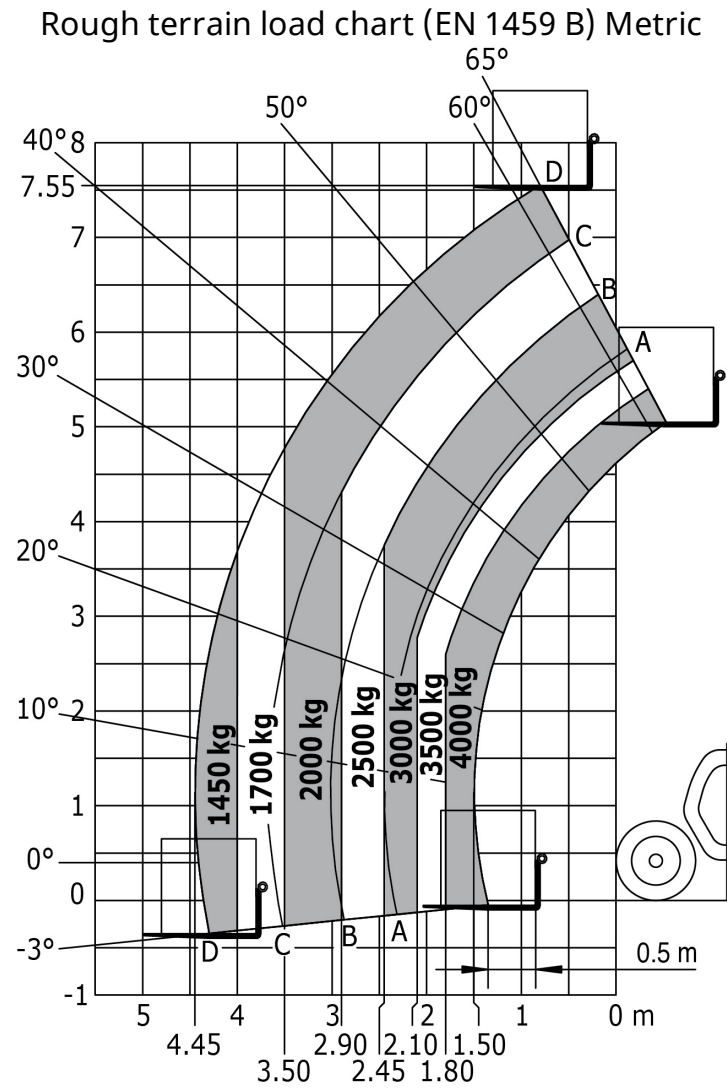
Options / Finishing

S : Standard / O : Optional / - : Not available

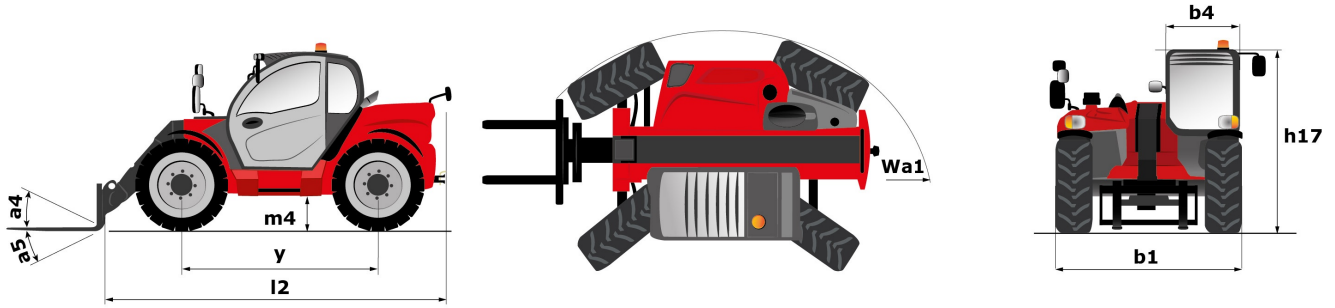
	Classic	Premium	Elite

led front road lights	O	O	-
Comfort			
Low frequency air suspension cloth-covered seat (GRAMMER)	O	O	S
Mechanical cloth-covered seat (GRAMMER)	S	-	-
Air suspension cloth-covered seat (GRAMMER)	O	S	-
Tuner car radio (50 W)	S	-	-
Bluetooth USB car radio with extra microphone (100 W)	O	O	S
Air conditioning with manual adjustment	O	S	S
Joystick Switch and Move (JSM) on floating & adjustable armrest	S	S	-
Hydraulics			
Hydraulic attachment locking	O	O	O
1 pair of pre-fitted Double Action rear hydraulic couplers	O	O	O
"Intelligent Hydraulics"	O	O	S
"Regenerative Hydraulics"	O	S	S
Electricity / Safety			
Audio warning on reverse	O	O	O
Front and rear work lights on cab (x4: 2 front + 2 rear)	S	-	-
Front and rear LED work lights on cab (x4 : 2 front + 2 rear)	-	S	S
Electric mirror with de-icing	O	O	S
LED + (4 additional work lights)	O	O	S
Roof wiper	S	S	S
Cab options			
Lateral wiper	S	S	S
Low frequency pneumatic cloth seat with heating (KAB)	O	-	-
Boom options			
Easy Connect System (E.C.S.)	S	S	S
Continuous flow hydraulics	O	O	S
Return pipe to hydraulic oil tank	O	O	O
Electrovalve for 2 hydraulic functions (on boom head)	O	O	O
Engine & Filtration			
Auto reversing fan	S	S	S
Safety/Security options			
Hydraulic trailer brake	O	O	O

Load chart



Dimensional drawing





Siège Social
430 rue de l'Aubinière - 44150 Ancenis Cedex - France
Tel: +33(0)2 40 09 10 11 - Fax: +33 (0)2 40 09 10 97
www.manitou.com



This brochure describes versions and configuration options for Manitou products which may be fitted with different equipment. The equipment described in this brochure may be standard, optional or not available depending on version. Manitou reserves the right to change the specifications shown and described at any time and without prior warning. The manufacturer is not liable for the specifications given. For more information, contact your Manitou dealer. Non-contractual document. Product descriptions may differ from actual products. List of specifications is not comprehensive. The logos and visual identity of the company are the property of Manitou and may not be used without authorisation. All rights reserved. The photos and diagrams contained in this brochure are provided for information only.

MANITOU BF SA - Limited company with board of directors - Share capital: 39,547,824 euros - 857 802 508
RCS Nantes