

Technical sheet :

# **MLT 961-145 V+ L**

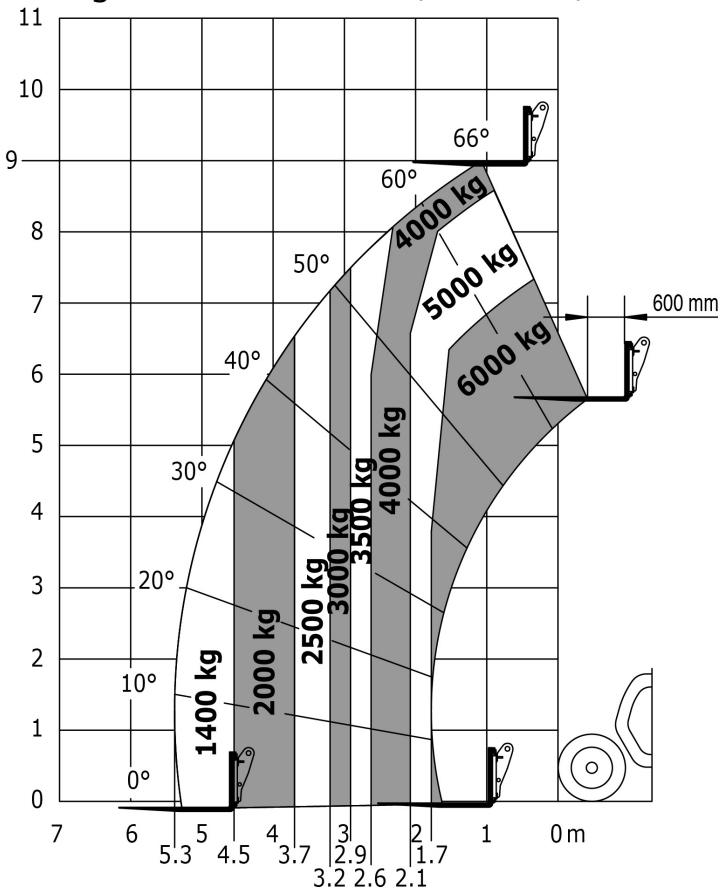
---



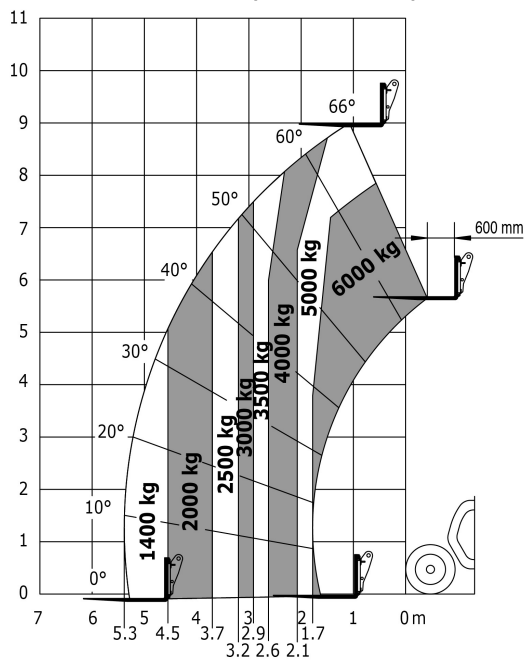
Capacities		Metric	Imperial
Max. capacity	Q	6000 kg	13228 lbs
Max. lifting height	h3	9 m	29 ft 6 in
Max. outreach	l4	5.3 m	17 ft 5 in
Reach at max. height		1.1 m	3 ft 7 in
Breakout force with bucket		7300 daN	7300 daN
Weight and dimensions			
Unladen weight (with forks)		11800 kg	26015 lbs
Ground clearance	m4	0.45 m	1 ft 6 in
Wheelbase	y	3 m	9 ft 10 in
Overall length to carriage (with hitch hook)	l11	6.1 m	20 ft
Front overhang		1.65 m	5 ft 5 in
Overall width	b1	2.48 m	8 ft 2 in
Overall cab width	b4	1 m	3 ft 3 in
Overall height	h17	2.53 m	8 ft 4 in
External turning radius (over tyres)	Wa1	4.3 m	14 ft 1 in
Standard tyres		Alliance - A580 - 500/70 R24 164A8	Alliance - A580 - 500/70 R24 164A8
Drive wheels (front / rear)		2 / 2	2 / 2
Steering wheels (front / rear)		2 / 2	2 / 2
Performances			
Lifting		8.5 s	8.5 s
Lowering		6.5 s	6.5 s
Extension		7 s	7 s
Retraction		6 s	6 s
Crowd		3.8 s	3.8 s
Dump		3.6 s	3.6 s
Engine			
Engine brand		John Deere	John Deere
Engine norm		Stage IV	Stage IV
Engine model		PWL 4045	PWL 4045
Number of cylinders - Capacity of cylinders		4 - 4500 cm <sup>3</sup>	4 - 274.61 in <sup>3</sup>
I.C. Engine power rating / Power (kW)		141 Hp / 104 kW	141 Hp / 104 kW
Max. torque / Engine rotation		540 @1600 tr/min	540 @1600 tr/min
Drawbar pull (Laden)		9300 daN	9300 daN
Reversible fan		Standard	Standard
Engine cooling system		3 radiators water intercooler hydraulic oil	3 radiators water intercooler hydraulic oil
Transmission			
Transmission type		M-VarioPlus	M-VarioPlus
Gearbox		M-Varioplus	M-Varioplus
Max. travel speed (may vary according to applicable regulations)		40 km/h	24.9 mph
Differential lock		Limited slip differential on front axle	Limited slip differential on front axle
Parking brake		Automatic Negative Hand-brake	Automatic Negative Hand-brake
Service brake		Oil-immersed multi-discs on front & rear axles	Oil-immersed multi-discs on front & rear axles
Hydraulics			
Hydraulic pump type		Variable pump	Variable pump
Hydraulic flow - Pressure		200 l/min - 270 Bar	200 l/min - 19 PSI
Flow sharing distributor		Standard	Standard
Tank capacities			
Hydraulic oil		153 l	33.66 gal
Fuel tank		135 l	29.7 gal
Diesel Exhaust fluid (AdBlue® type)		12 l	2.64 gal
Noise and vibration			
Noise at driving position (LpA) tested following NF EN 12053 norm		72 dB(A)	72 dB(A)
Environmental noise (LwA)		105 dB(A)	105 dB(A)
Vibration to whole hand/arm		< 2.50 m/s <sup>2</sup>	< 2.50 m/s <sup>2</sup>
Miscellaneous			
Safety tractor homologation / cabin homologation		Safety tractor homologation - Cab ROPS - FOPS Level 2	Safety tractor homologation - Cab ROPS - FOPS Level 2
Controls		JSM	JSM

# Load chart

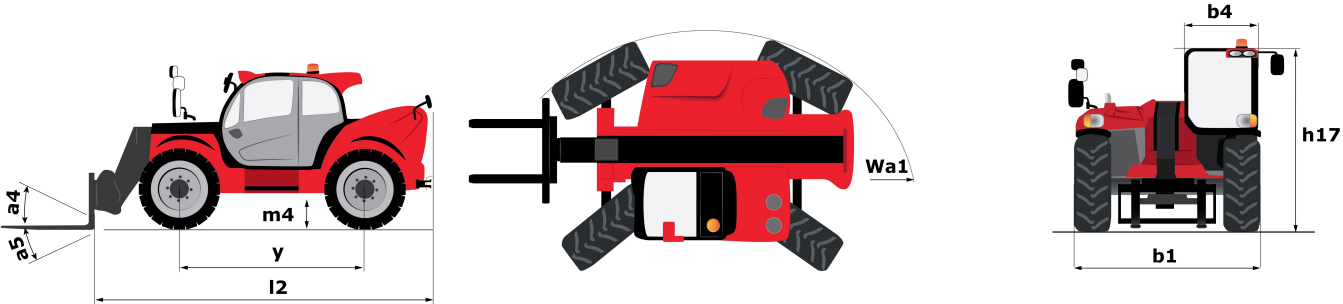
Rough terrain load chart (EN 1459 B) Metric



Industrial load chart (EN 1459 A) Metric



# Dimensional drawing





Siège Social  
430 rue de l'Aubinière - 44150 Ancenis Cedex - France  
Tel: +33(0)2 40 09 10 11 - Fax: +33 (0)2 40 09 10 97  
[www.manitou.com](http://www.manitou.com)



This brochure describes versions and configuration options for Manitou products which may be fitted with different equipment. The equipment described in this brochure may be standard, optional or not available depending on version. Manitou reserves the right to change the specifications shown and described at any time and without prior warning. The manufacturer is not liable for the specifications given. For more information, contact your Manitou dealer. Non-contractual document. Product descriptions may differ from actual products. List of specifications is not comprehensive. The logos and visual identity of the company are the property of Manitou and may not be used without authorisation. All rights reserved. The photos and diagrams contained in this brochure are provided for information only.

MANITOU BF SA - Limited company with board of directors - Share capital: 39,547,824 euros - 857 802 508  
RCS Nantes