

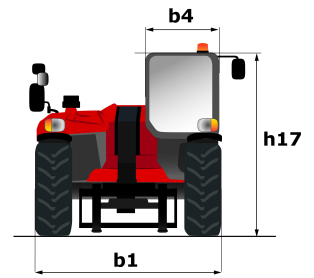
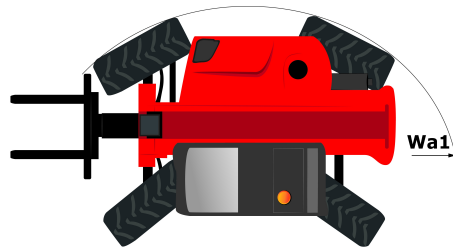
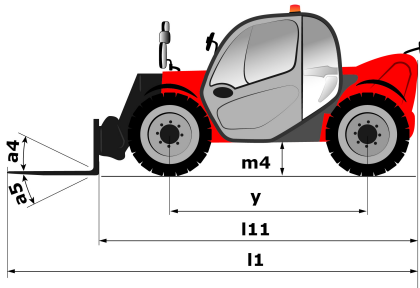
Technical sheet :

MT 625 H



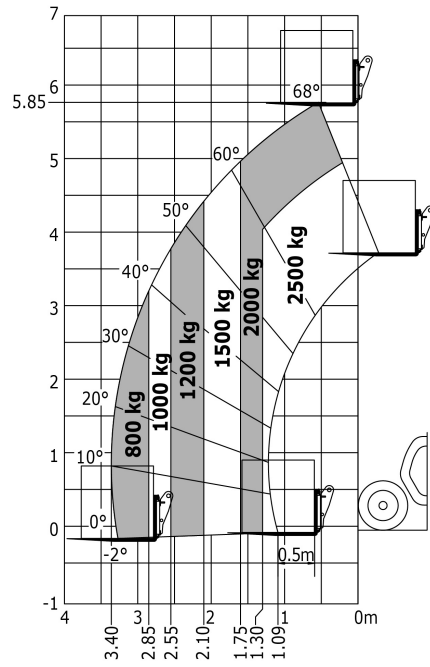
Capacities		Metric	Imperial
Max. capacity	Q	2500 kg	5512 lbs
Max. lifting height	h3	5.85 m	19 ft 2 in
Max. Reach	l4	3.4 m	11 ft 2 in
Breakout force with bucket		3427 daN	3427 daN
Weight and dimensions			
Overall length to carriage	l11	3.9 m	12 ft 10 in
Overall length (with forks)	l1	3.9 m	12 ft 10 in
Overall width	b1	1.81 m	5 ft 11 in
Overall height	h17	1.92 m	6 ft 4 in
Wheelbase	y	2.3 m	7 ft 7 in
Ground clearance	m4	0.33 m	1 ft 1 in
Overall cab width	b4	0.79 m	2 ft 7 in
Tilt-up angle	a4	12 °	12 °
Outer turning radius	Wa3	3.31 m	10 ft 10 in
External turning radius (over tyres)	Wa1	3.31 m	10 ft 10 in
Unladen weight (with forks)		4800 kg	10582 lbs
Tyres type		Pneumatic	Pneumatic
Standard tyres		Solideal 12-16,5 12PR SKS XT TL	Solideal 12-16,5 12PR SKS XT TL
Forks length / width / section	l / e / s	1200 mm x 125 mm x 45 mm	47.244 in x 4.921 in x 1.772 in
Performances			
Lifting		8 s	8 s
Lowering		5.4 s	5.4 s
Extension		5.6 s	5.6 s
Retraction		4.3 s	4.3 s
Scoop		3.5 s	3.5 s
Crowd		3.5 s	3.5 s
Dump		3.6 s	3.6 s
Engine			
Engine brand		Kubota	Kubota
Engine norm		Stage 5 / Tier IV Final	Stage 5 / Tier IV Final
Engine model		V3307-CR-TE5B	V3307-CR-TE5B
Number of cylinders / Capacity of cylinders		4 - 3331 cm ³	4 - 203.27 in ³
I.C. Engine power rating - Power (kW)		75 Hp / 55.4 kW	75 Hp / 55.4 kW
Max. torque / Engine rotation		265 @ 1400 tr/min	265 @ 1400 tr/min
Drawbar pull (Laden)		3550 daN	3550 daN
Transmission			
Transmission type		Hydrostatic	Hydrostatic
Number of gears (forward / reverse)		2 / 2	2 / 2
Travel speed (laden)		24.9 km/h	15.5 mph
Max. travel speed (may vary according to applicable regulations)		24.9 km/h	15.5 mph
Parking brake		Automatic negative parking brake	Automatic negative parking brake
Service brake		Oil-Immersed multi-discs braking on front axles	Oil-Immersed multi-discs braking on front axles
Axle Manufacturer		Dana	Dana
Hydraulics			
Hydraulic pump type		Gear Pump	Gear Pump
Hydraulic flow / Pressure		90 l/min / 235 Bar	90 l/min / 16 PSI
Tank capacities			
Engine oil		11.2 l	2.46 gal
Hydraulic oil		115 l	25.3 gal
Fuel tank		63 l	13.86 gal
Noise and vibration			
Noise at driving position (LpA)		76 dB(A)	76 dB(A)
Noise to environment (LwA)		104 dB(A)	104 dB(A)
Vibration on hands/arms		2.5 Nm	8.2 ft/s
Miscellaneous			
Steering wheels (front / rear)		2 / 2	2 / 2
Drive wheels (front / rear)		2 / 2	2 / 2
Safety / Safety cabin homologation		Standard EN 15000 / Cab ROPS - FOPS Level 1	Standard EN 15000 / Cab ROPS - FOPS Level 1
Controls		JSM	JSM

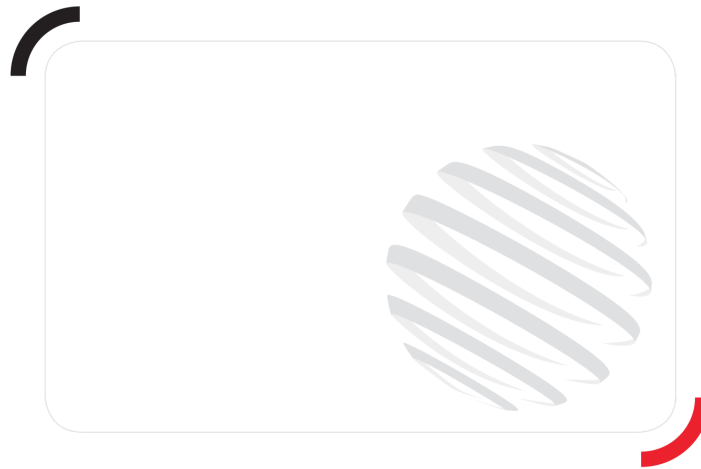
Dimensional drawing



Load chart

Machine on tyres with forks - with Metric





Siège Social

430 rue de l'Aubinière - 44150 Ancenis Cedex - France

Tel: +33(0)2 40 09 10 11 - Fax: +33 (0)2 40 09 10 97

www.manitou.com



This brochure describes versions and configuration options for Manitou products which may be fitted with different equipment. The equipment described in this brochure may be standard, optional or not available depending on version. Manitou reserves the right to change the specifications shown and described at any time and without prior warning. The manufacturer is not liable for the specifications given. For more information, contact your Manitou dealer. Non-contractual document. Product descriptions may differ from actual products. List of specifications is not comprehensive. The logos and visual identity of the company are the property of Manitou and may not be used without authorisation. All rights reserved. The photos and diagrams contained in this brochure are provided for information only.

MANITOU BF SA - Limited company with board of directors - Share capital: 39,547,824 euros - 857 802 508
RCS Nantes