

Technical sheet :

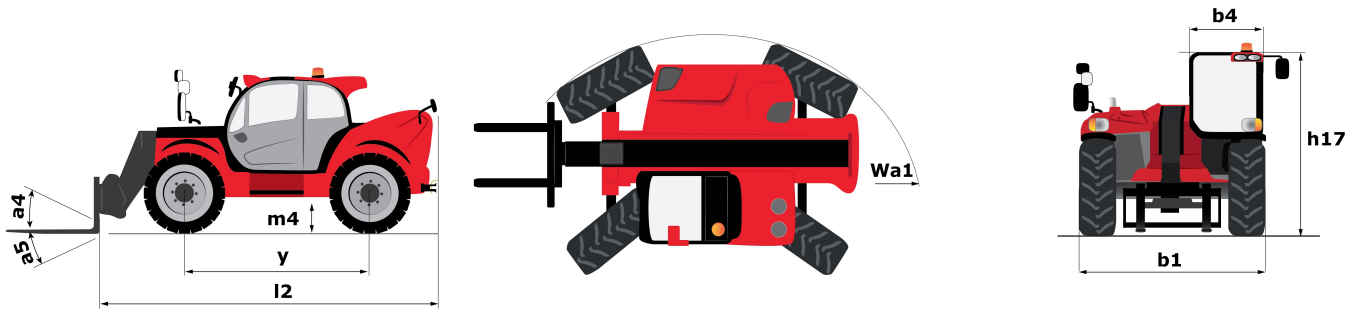
# **MTA 8044 E74**

---

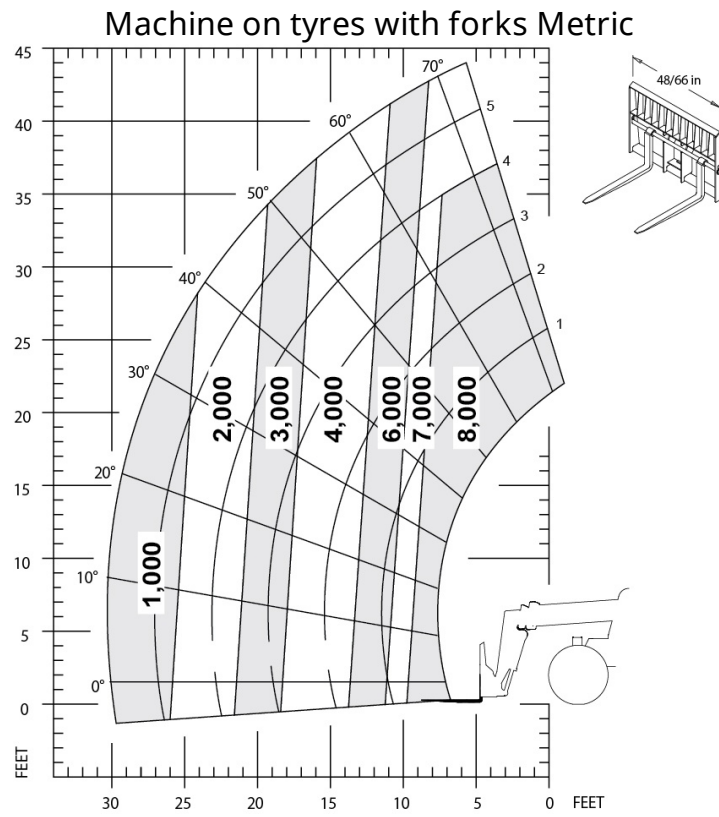


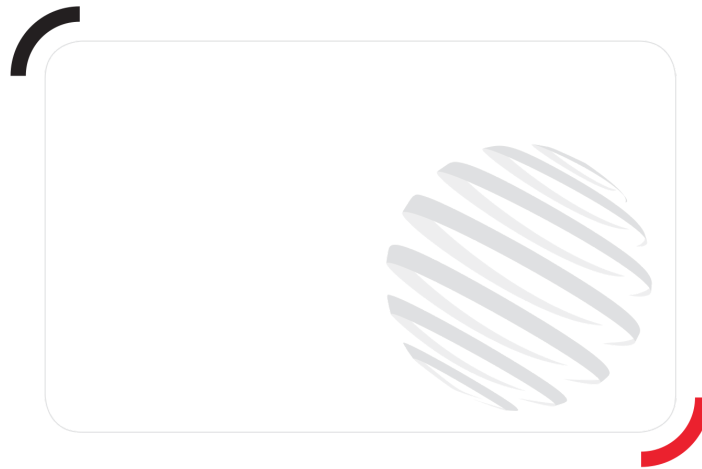
Capacities		Metric	Imperial
Max. capacity	Q	3629 kg	8001 lbs
Max. lifting height	h3	13.4 m	44 ft
Max. Reach	l4	9.3 m	30 ft 6 in
Weight and dimensions			
Overall length to carriage	l11	6.04 m	19 ft 10 in
Overall length (with forks)	l1	6.04 m	19 ft 10 in
Overall width	b1	2.5 m	8 ft 2 in
Overall height	h17	2.34 m	7 ft 8 in
Wheelbase	y	3.03 m	9 ft 11 in
Ground clearance center	m4	406 mm	15.984 in
Overall cab width	b4	838 mm	32.992 in
Tilt-up angle	a4	12 °	12 °
Tilt-down angle	a5	112 °	112 °
Outer turning radius	Wa3	4.2 m	13 ft 9 in
Unladen weight (with forks)		10660 kg	23501 lbs
Standard tyres		13 x 24	13 x 24
Forks length / width / section	l / e / s	1200 mm x 125 mm x 45 mm	47.244 in x 4.921 in x 1.772 in
Frame Levelling Longitudinal +/- (Degree)		10	10
Performances			
Lifting		11 s	11 s
Lowering		8 s	8 s
Extension		14 s	14 s
Retraction		12 s	12 s
Crowd		7 s	7 s
Dump		4 s	4 s
Engine			
Engine brand		Cummins	Cummins
Engine norm		Stage IV / Tier 4 Final	Stage IV / Tier 4 Final
Engine model		QSF 3.8	QSF 3.8
Number of cylinders / Capacity of cylinders		4 - 3.8 cm <sup>3</sup>	4 - 0.23 in <sup>3</sup>
Power (kW)		55 kW	55 kW
Max. torque		400 Nm	400 Nm
Transmission			
Transmission type		Torque Converter with powershift	Torque Converter with powershift
Number of gears (forward / reverse)		4 / 3	4 / 3
Parking brake		Sahr	Sahr
Service brake		Wet disc brakes	Wet disc brakes
Axle Manufacturer		Dana	Dana
Hydraulics			
Hydraulic pump type		Gear Pump	Gear Pump
Hydraulic flow / Pressure		157 l/min / 207 Bar	157 l/min / 14 PSI
Tank capacities			
Engine oil		14.7 l	3.23 gal
Hydraulic oil		170 l	37.39 gal
Fuel tank		178 l	39.15 gal
Miscellaneous			
Steering wheels (front / rear)		2 / 2	2 / 2
Drive wheels (front / rear)		2 / 2	2 / 2
Safety cabin homologation		ROPS/FOPS	ROPS/FOPS
Controls		Single Joystick FNR	Single Joystick FNR

# Dimensional drawing



# Load chart





Siège Social  
430 rue de l'Aubinière - 44150 Ancenis Cedex - France  
Tel: +33(0)2 40 09 10 11 - Fax: +33 (0)2 40 09 10 97  
[www.manitou.com](http://www.manitou.com)



This brochure describes versions and configuration options for Manitou products which may be fitted with different equipment. The equipment described in this brochure may be standard, optional or not available depending on version. Manitou reserves the right to change the specifications shown and described at any time and without prior warning. The manufacturer is not liable for the specifications given. For more information, contact your Manitou dealer. Non-contractual document. Product descriptions may differ from actual products. List of specifications is not comprehensive. The logos and visual identity of the company are the property of Manitou and may not be used without authorisation. All rights reserved. The photos and diagrams contained in this brochure are provided for information only.

MANITOU BF SA - Limited company with board of directors - Share capital: 39,668,399 euros - 857 802 508  
RCS Nantes