

MANITRANSIT

TMT 320 S

ROUGH TERRAIN TELESCOPIC TRUCK-MOUNTED FORKLIFT
The light rough-terrain with 2000 kg capacity



TMT 320 S

A UNIQUE CONCEPT, PATENTED BY MANITOU



Load capacities (load centre 500mm)

Nominal capacity :2000 kg
(in front of wheels, at max. height)
Maximum capacity :2000 kg
(between wheel arms, on tyres)



Telescopic boom (without additional equipment)

Maximum lifting height :3,00 m
Maximum forward reach :1,06 m
Side-shift :150 mm
Tipping/crowding :7°/100°
2 cross levers for all movements



Wheels

3 wheel drive
Front tyres :23 x 8,5-12 SS 6 PR (overall $\varnothing = 597$ mm)
Rear tyre :10 x 16,5 10 PR SKS (overall $\varnothing = 788$ mm)
2 stabilizers standard



Engine

KUBOTA D1105 E
Capacity :3 cyl. - 1123 cm³
Power (DIN 70020) :26,5 HP/19,5 kw



Transmission

Type :hydrostatic
Reversing shift (on lever) :electro-magnetic
Differential lock :foot-operated
Maximum travel speed :10 km/h
Hydraulic pump :220 bar/35,5 l/mn



Tanks

Fuel :40 L
Hydraulic oil :35 L



Dimensions

Overall width :2360 mm
Overall height :2209 mm
Turning radius (rear wheel axle) :1850 mm
Turning circle (rear frame) :2674 mm
Ground clearance :359 mm
Overhang :1170 mm
Overall weight (including 1100mm forks) :2040 kg



Design and safety

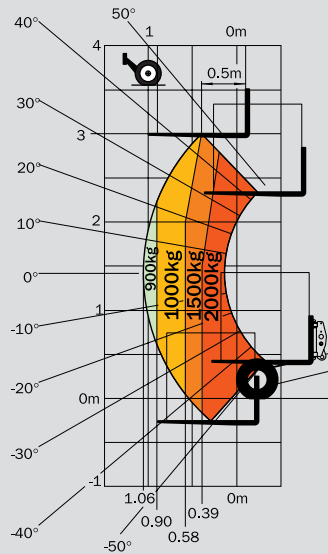
ROPS/FOPS cab and overload indicator
Stability testings under EN 1459 B regulation
Full visibility
Waterproof dashboard and electric connections
Closed frame for full protection of components
High resistance polyurethane painting
Low cost and easy maintenance



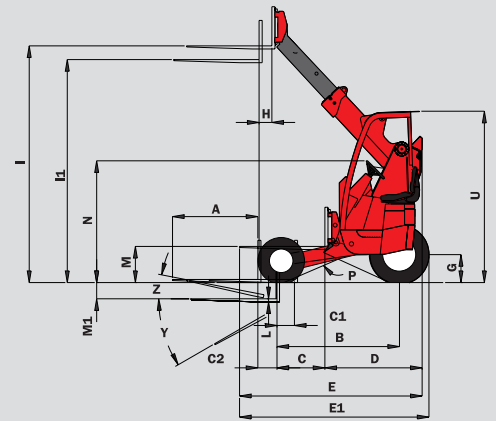
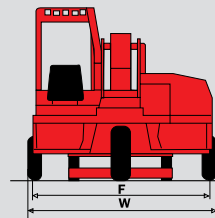
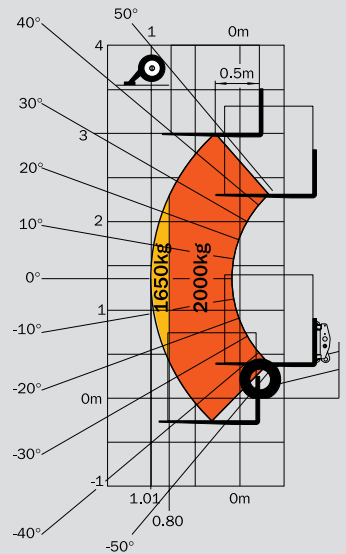
Hooking (in option)

Mounting kit with homologated crash bar
Fitting and load study
Possible adaptation to any existing mounting kit

On tyres
(load centre 500 mm)

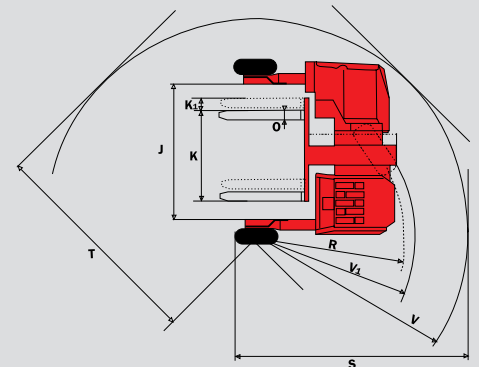


On stabilizers
(load centre 500 mm)



A	1100	L	36
B	1525	M	462
C	566	M1	213
C1	172	N	1570
C2	297	O	125
D	1251	P	51°
E	2351	R	1850
E1	2439	S	3164
F	2096	T	2765
G	359	U	2209
H	170	V	2674
I	3048	V1	1980
I1	2866	W	2360
J	1561	Y	100°
K	1070	Z	7°
K1	150		

mm



Options

- 1200 mm and 2000 mm forks
- Load backrest (1300X468 mm)
- Hydraulic line for attachments
- Rotating beacon and road lights
- Light on reversing shift and working lights
- Rear lights protection
- Rear view mirrors (inside and outside)
- Transparent roof guard
- Seat cover
- Warning horn on reversing shift
- Cooling oils
- Self-cleaning filter

This publication in no way constitutes an offer and the company reserves the right to alter specification without prior notice.
The MANITOU models presented in this brochure can be supplied complete with optional equipment attachments.
IMPORTANT : All regulations relating to vehicles apply to vehicles equipped with truck-mounted forklifts.



MANITOU B.F. S.A.

B.P.249 - 44158 ANCENIS CEDEX - FRANCE

TEL : 33 2 40 09 10 11

EXPORT DEPARTMENT FAX : 33 2 40 09 10 97

www.manitou.com